



# basic education

Department:  
Basic Education  
**REPUBLIC OF SOUTH AFRICA**

## **NATIONAL SENIOR CERTIFICATE**

**GRADE 12**

**CONSUMER STUDIES**

**FEBRUARY/MARCH 2014**

**MARKS: 200**

**TIME: 3 hours**

**This question paper consists of 16 pages.**



**INSTRUCTIONS AND INFORMATION**

1. This question paper consists of FIVE sections.

<b>SECTION</b>	<b>MARKS</b>	<b>TIME (MINUTES)</b>
A. Short Questions	40	20
B. Food and Nutrition	40	40
C. Clothing	40	40
D. Housing and Soft Furnishings	40	40
E. Theory of Production and Entrepreneurship	40	40

2. ALL the sections are COMPULSORY.
3. Answer SECTION A and SECTION B in the ANSWER BOOK.
4. Number the answers correctly according to the numbering system used in this question paper.
5. Start EACH question on a NEW page.
6. You are allowed to use a calculator.
7. Write with black or blue ink only.
8. Pay attention to spelling and sentence construction.
9. Write neatly and legibly.



**SECTION A: SHORT QUESTIONS****QUESTION 1**

1.1 Various options are given as possible answers to the following questions. Choose the answer and write only the letter (A–D) next to the question number (1.1.1–1.1.18) in the ANSWER BOOK.

- 1.1.1 Select the foods rich in water-soluble fibre that will benefit a person suffering from high cholesterol:
- A Beans and nuts
  - B Raisins and maize
  - C Apples and pulses
  - D Brown rice and grapes (1)
- 1.1.2 Identify foods which will strengthen the immune system of an HIV/Aids patient:
- A Spinach, butternut squash and soya beans
  - B Apples, white bread and fried chicken
  - C Fish pie, vegetable salad and yoghurt
  - D Maize, peanuts and milk (1)
- 1.1.3 A person on a gluten-free diet can safely use the following products:
- A Wheat and mealies
  - B Oats and soya beans
  - C Rice and maize meal
  - D Barley and rye (1)
- 1.1.4 Choose the condition where the arteries narrow and clog due to a build-up of cholesterol within the walls of the arteries:
- A Osteomalacia
  - B Atherosclerosis
  - C Diabetes
  - D Anaemia (1)
- 1.1.5 Choose a risk factor for coronary heart diseases which can be controlled through diet:
- A Osteoporosis
  - B Physical inactivity
  - C High blood pressure
  - D Diabetes (1)



- 1.1.6 The most suitable snack for someone with high blood pressure:
- A Oatmeal biscuits
  - B Shredded biltong
  - C Salted nuts
  - D Savoury biscuits
- (1)
- 1.1.7 The nutrient that increases the absorption of iron:
- A Vitamin B<sub>1</sub>
  - B Vitamin B<sub>3</sub>
  - C Vitamin C
  - D Vitamin A
- (1)
- 1.1.8 Regular exercise will lower a diabetic's ... level.
- A blood-cholesterol
  - B blood pressure
  - C gluten
  - D insulin
- (1)
- 1.1.9 You have an overdraft of R14 000,00 on which you pay 12,5% interest. You still owe R50 000,00 on your home loan, on which you pay 9% interest. What should you do when you receive your bonus?
- A Invest it at a fixed interest rate for a year
  - B Save it in your credit card account
  - C Deposit it in your home loan account
  - D Pay as much of your overdraft as possible
- (1)
- 1.1.10 The consumer who will gain from a rising interest rate is one who ...
- A is paying off a car loan and has money in a savings account.
  - B has paid all his debt but has not managed to save yet.
  - C is renting a house and is saving money in a savings account.
  - D buys most items with his credit card and has money invested in shares.
- (1)
- 1.1.11 Sara saved R300,00 per month in a bank savings account for five years. Now that she wants to use the money, it can buy less than she expected. This is an example of ...
- A interest.
  - B tax.
  - C recession.
  - D inflation.
- (1)



1.1.12 The term for a distinctive form of dress with recognisable qualities:

- A Couture
- B Fashion
- C Style
- D Trend

(1)

1.1.13 Fashion change is promoted by ...

- A fashion-conscious consumers.
- B leading fashion designers.
- C elegant fashion leaders.
- D extravagant fashion shows.

(1)

1.1.14 Select the shoe which would be most suitable to wear to work with formal black pants:

**1**

Dark brown  
leather lace-up  
boot

**2**

Black boat  
shoe with  
white laces

**3**

Black leather  
lace-up shoe

**4**

Black shoe  
with cotton  
upper and  
white laces

- A 1
- B 2
- C 3
- D 4

(1)

1.1.15 Some retail stores sell products made of organic cotton. This is because ...

- A consumers dislike natural fabrics.
- B retailers are concerned about the environment.
- C the economic recession has hit both retailers and consumers.
- D organic cotton is cheaper than non-organic cotton.

(1)

1.1.16 A medical certificate may be required if an employee is sick for ...

- A one day.
- B two days.
- C more than three consecutive days.
- D more than two consecutive days.

(1)



- 1.1.17 Choose a reason why some entrepreneurs fail:
- A They take calculated risks
  - B Fixed interest
  - C Customer credit
  - D They work long hours
- (1)

- 1.1.18 The following may be deducted from the salary of an employee who earns R4 500,00 per month:
- A Licences
  - B Interest
  - C Tax
  - D UIF
- (1)

1.2 Choose the correct word(s) in brackets to complete each statement. Write the word(s) next to the question number (1.2.1–1.2.5) in the ANSWER BOOK.

1.2.1 The home seller has to pay (asset gains tax/capital gains tax) on the profit he/she makes on his/her second home.

1.2.2 Tax paid on non-essential items, such as alcohol and tobacco, is known as (import duty/excise duty).

1.2.3 A person who earns more than R70 000,00 per year has to pay (income tax/provisional tax).

1.2.4 Tax deducted from the employee's salary is known as (pay-as-you-spend/pay-as-you-earn) tax.

1.2.5 (Services added tax/Value added tax) is added to the purchase price of certain specified goods and services.

(5)

1.3 Choose FOUR reasons from the list below why many young adults choose to buy brand labels. Write only the letter (A–H) next to the question number (1.3) in the ANSWER BOOK.

- A They are a symbol of a high social status.
  - B They are cheap.
  - C They are timeless.
  - D They are widely available.
  - E They indicate good style/taste.
  - F They boost the wearer's self-esteem.
  - G They increase sales.
  - H They guarantee instant popularity.
- (4)



- 1.4 Choose THREE requirements from the list below that will make a contract a legal document when buying a house. Write only the letters (A–F) next to the question number (1.4) in the ANSWER BOOK.
- A The buyer must pay the deposit in cash.
  - B The seller must sign the front page of the document.
  - C The buyer should be able to meet the stipulated payments.
  - D Both buyer and seller must be of sound mind.
  - E The deed of sale must be included in the contract.
  - F Both buyer and seller must agree on the contents of the contract. (3)
- 1.5 Identify FIVE aspects from the list below which should be considered when planning the division of work and time schedules. Write only the letters (A–J) next to the question number (1.5) in the ANSWER BOOK.
- A Available equipment
  - B Availability of raw materials
  - C Customer relations
  - D Financial record keeping
  - E Place of sale
  - F Production cost
  - G Skills of the workers
  - H Target delivery dates
  - I Target market
  - J Time needed to complete each process (5)
- 1.6 The following statements are INCORRECT. Change the underlined word(s) to make each statement CORRECT. Write the word(s) next to the question number (1.6.1–1.6.5) in the ANSWER BOOK.
- 1.6.1 Transfer duty is paid to the estate agent.
  - 1.6.2 A home owner may receive a deposit as a fringe benefit from the employer.
  - 1.6.3 The deeds office fee is regulated by the estate agent.
  - 1.6.4 Levies are paid to the municipality.
  - 1.6.5 When buying on a store account, the retailer keeps the item until the full amount is paid. (5)

**TOTAL SECTION A: 40**



**SECTION B: FOOD AND NUTRITION**

**QUESTION 2**

2.1 Riaad, a 16-year-old boy, does not eat any animal products except eggs, milk and milk products.

2.1.1 Name the nutrition-related disease Riaad is likely to develop. (1)

2.1.2 Explain why Riaad is likely to develop the nutrition-related disease named in QUESTION 2.1.1. (3)

2.1.3 Suggest why Riaad is not at risk of developing osteoporosis. (3)

2.2 Read the extract below and answer the questions that follow.

Linda is 18 years old and is obese with a BMI rating of 32. She wakes up too late in the morning to have breakfast. She walks to school every day. At school she often buys toasted cheese and tomato sandwiches made with brown bread and orange juice. She plans to join the school's netball team. She enjoys watching TV and snacks on crisps and sweet biscuits.

2.2.1 Explain to Linda what *BMI* stands for and what it is used for. (2)

2.2.2 Considering Linda's current lifestyle, name the type of diabetes she is likely to develop. (1)

2.2.3 Explain why Linda is at risk of developing the type of diabetes named in QUESTION 2.2.2. (2)

2.2.4 Recommend FIVE changes that Linda can make to her diet and lifestyle to lose weight. Complete the table below in the ANSWER BOOK.

ASPECT	SUGGESTED CHANGES
(a) Diet	(4)
(b) Lifestyle	(1)

(5)





- 2.3 Read the information below, which appeared on a cereal box, and answer the questions that follow.

**ALL YOU NEED TO GROW BIG AND STRONG IS A WARM, SAFE PLACE TO SLEEP, SOMEONE WHO LOVES YOU AND ABC CEREAL**

ABC CEREAL is the healthiest and most nutritious family cereal in South Africa.

ABC CEREAL is high in fibre and provides 18 vitamins and minerals.

ABC CEREAL IS ONE OF SOUTH AFRICA'S FAVOURITE CEREALS.

Recommended by leading doctors

*Look out for the new ABC CEREAL packs with 'Brain Boosters' on the back.*

- 2.3.1 Identify THREE misleading statements in the information above. (3)
- 2.3.2 Give reasons why the statements (QUESTION 2.3.1) are considered to be misleading statements. (4)
- 2.3.3 List THREE channels for consumer complaints with regard to misleading information on food labels. (3)
- 2.4 Study the list of ingredients for salads and answer the questions that follow.

SALAD A	SALAD B
250 ml cooked shell noodles	250 g fried chicken pieces
50 ml green peppers	200 ml green beans
50 ml grated carrots	100 g cheddar cheese, cubed
2 boiled eggs	125 ml croûtons
50 ml olive oil	125 ml mayonnaise


- 2.4.1 Give SIX reasons why SALAD A would be beneficial for a person suffering from HIV/Aids, with sores in his/her mouth. (6)
- 2.4.2 Evaluate the suitability of SALAD B for an obese person. (7)

**TOTAL SECTION B: 40**



**SECTION C: CLOTHING****QUESTION 3**

- 3.1 The dress below was advertised for the summer of 2012. Study the photograph and description and answer the questions that follow.

	<p>The woman in the photograph is wearing a dress with folds at the cross-over neckline, a raised waistband and a slightly flared knee-length skirt. This creates a timeless silhouette while polka dots add a retro 1950s feel to this summer dress.</p> <p>[Adapted from <a href="http://www.woolworths.co.za">www.woolworths.co.za</a>]</p>
--	--

- 3.1.1 Explain the term *silhouette* in the context of this photograph. (2)
- 3.1.2 Name THREE non-verbal messages conveyed by the dress in the photograph. (3)
- 3.2 Read the information below and answer the question that follows.

<p style="text-align: center;"><b>OPEN AN ACCOUNT</b></p> <p>A Truworths account gives you access to a world of internationally inspired fashion. It's entirely up to you whether you make your purchases on the six-month special plan, where interest may not be charged (at Truworths' sole discretion) if your account payments are up to date, or on the 12-month, interest-bearing plan.</p> <p style="text-align: right;">[Source: <a href="http://www.truworths.co.za">www.truworths.co.za</a>]</p>
---

- State when a Truworths account holder will pay interest. (2)

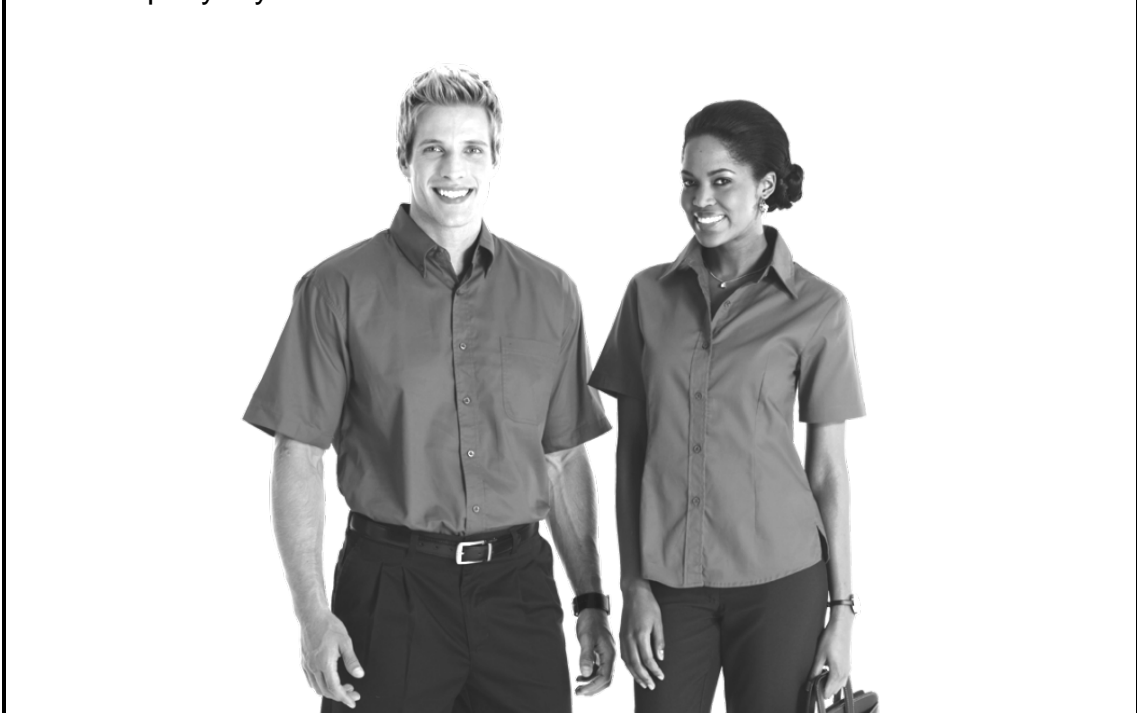


- 3.3 Study the photograph and the information below and answer the questions that follow.

The photograph shows the dress code of a company.

The corporate clothing consists of:

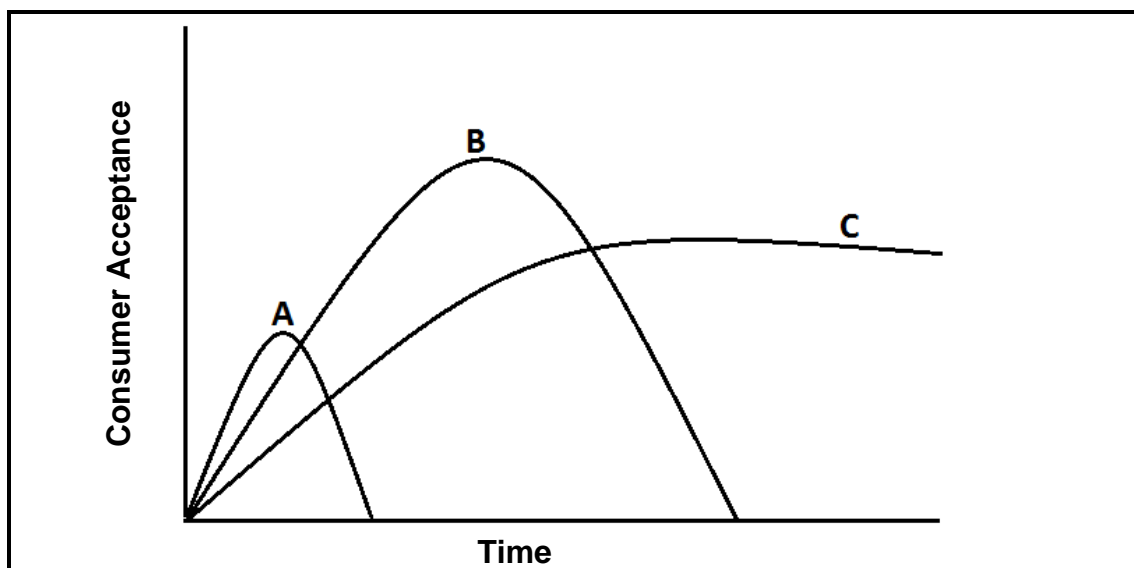
- Any smart formal black trousers/pants/skirt
- Company royal blue shirt/blouse



- 3.3.1 State FOUR advantages of corporate clothing for the company and the employees. (2 x 2) (4)
- 3.3.2 Name FOUR ways in which the employees can express their individuality when they wear corporate clothing. (4)
- 3.3.3 Explain how a good first impression of an employee can benefit:
- (a) The company (4)
- (b) The employee himself/herself (4)



3.4 Study the graph below, which shows three different fashion cycles, and answer the questions that follow.



3.4.1 Name each fashion cycle (A–C) in the graph. (3)

3.4.2 Give a brief description of EACH of the above-mentioned fashion cycles. (3 x 2) (6)

3.5 Read the scenario below and answer the question that follows.

A young male adult is about to start his first job at a law firm. He already has a black jacket and a pair of formal black shoes. The lists below include clothing items that he considers buying on a limited budget.

LIST A	LIST B
Black cardigan (jersey)	Black trousers
Brown jacket	Charcoal trousers
Stone colour trench coat	White shirt
Brown trousers	White shirt with thin black stripes
Dark blue jeans	Light blue shirt
White T-shirt	Charcoal cardigan (jersey)
Shirt with large red and blue checks	Grey waistcoat

Choose ONE list and give reasons why you would consider it to be a good choice. (8)

**TOTAL SECTION C: 40**



**SECTION D: HOUSING AND SOFT FURNISHINGS****QUESTION 4**

4.1 Study the scenario below and answer the questions that follow.

<p>Tom, Gina and their 5-year-old son live in a rented house. Tom often works in other cities. They have saved enough money to pay a deposit when they buy their own property. There are many costs involved when buying property and they realise that they will have limited funds for maintenance during the first few years. After looking at many properties, they find two that they like. They must finally choose between the two properties described below.</p>	
<p><b>PROPERTY A</b></p> <p>R800 000,00</p> <p>Semi-detached three-bedroom house in a secure complex with a small garden</p> <p>Large communal lawn and swimming pool</p> <p>Levy, including property rates and taxes: R700,00 per month</p>	<p><b>PROPERTY B</b></p> <p>R800 000,00</p> <p>Three-bedroom house in quiet neighbourhood with large garden and swimming pool</p> <p>Property rates and taxes: R600,00 per month</p>

- 4.1.1 Identify the type of home ownership of:
- (a) PROPERTY A (1)
- (b) PROPERTY B (1)
- 4.1.2 Name SIX costs that Tom and Gina must provide for when they take out a mortgage bond. (6)
- 4.1.3 Name the specific hidden cost that Tom and Gina have to pay if they have to move into their new home before it is registered in their names. (1)
- 4.1.4 To whom must Tom and Gina pay the hidden cost named in QUESTION 4.1.3? (1)
- 4.1.5 In the process of buying the property, they will have to sign an offer to purchase. Explain the link between an *offer to purchase* and the *deed of sale*. (4)



- 4.1.6 Evaluate the suitability of PROPERTY A and PROPERTY B by completing the table below in the ANSWER BOOK:

CRITERIA	PROPERTY A	PROPERTY B
(a) Security	(2)	(2)
(b) Maintenance	(2)	(2)
(c) Privacy	(2)	(2)

(12)

- 4.1.7 Select the most suitable property for the family.

(1)

- 4.2 Read the scenario below and answer the questions that follow.

Tom and Gina bought a television set for their lounge. Considering all the costs involved in buying their house, they bought a second-hand set. Soon after buying the television set they experienced problems with it that the seller had not informed them about. They had to send it to be repaired. The final bill for the repairs was more than the original quotation made by the repair company.

- 4.2.1 State Tom and Gina's rights according to the Consumer Protection Act with regard to the second-hand television set that they bought.

(3)

- 4.2.2 Explain why it would have been better for Tom and Gina to buy a television set on an instalment plan than to buy a second-hand set.

(4)

- 4.3 Waste control is the responsibility of every household. Explain the effect of an irresponsible attitude towards waste control on the conservation of the environment.

(6)

**TOTAL SECTION D: 40**



**SECTION E: THEORY OF PRODUCTION AND ENTREPRENEURSHIP**

**QUESTION 5**

- 5.1 List FOUR functions of good quality packaging for consumable products. (4)
- 5.2 Name THREE methods which an entrepreneur can use to do market research in his/her local community. (3)
- 5.3 Read the scenario below and answer the questions that follow.

Mike and Jeff manufacture similar products.

<b>MIKE</b>	<b>JEFF</b>
<ul style="list-style-type: none"> <li>Employs people with very basic skills</li> <li>Buys the cheapest raw materials and imported materials</li> <li>Produces one product at R30,00 and sells it for R60,00</li> <li>Marketed his products well from the beginning</li> <li>Received a number of complaints and customers are returning products</li> </ul>	<ul style="list-style-type: none"> <li>Employs people with very basic skills</li> <li>Regularly gives his staff training opportunities</li> <li>Buys only from local suppliers</li> <li>Displays the logo below on his products</li> </ul> <div style="text-align: center; margin: 10px 0;">  </div> <ul style="list-style-type: none"> <li>Produces one product at R50,00 and sells it for R90,00</li> <li>Did not have money for marketing during the first few months, but marketed more widely in the sixth month</li> </ul>

The table below shows the average sales figures for both businesses for the first year.

	<b>MIKE</b>	<b>JEFF</b>
<b>Sales for months 1–6</b>	1 000 products per month	750 products per month
<b>Sales for months 7–12</b>	900 products per month	800 products per month

- 5.3.1 Mike's enterprise received a number of complaints and customers are returning products. Explain how Mike should deal with these customers in order to maintain good customer relations. (5)



- 5.3.2 Jeff regularly gives his staff training opportunities. Suggest TWO ways in which his staff could be trained. (2)
- 5.3.3 Jeff did not have a lot of money to market his products during the first few months. Suggest THREE ways in which Jeff could have marketed his products in a cheaper or more affordable way. (3)
- 5.3.4 Jeff uses the Proudly South African logo on his products. Explain why this could give him a competitive advantage. (3)
- 5.3.5 Mike and Jeff both made R30 000,00 profit per month for the first six months. Explain why they made the same profit. (2)
- 5.3.6 Calculate the monthly profit of Mike's enterprise for months 7–12. Show ALL calculations. (6)
- 5.3.7 Jeff decides to produce 900 products in month 13. How many products must be sold in order to break even? (4)
- 5.3.8 Explain possible reasons for the differences in the sales in the first six months and the last six months for:
- (a) Mike (4)
- (b) Jeff (4)

**TOTAL SECTION E: 40**  
**GRAND TOTAL: 200**






5.3.2	Jeff sorg gereeld vir opleidingsgeleenthede vir sy personeel. Stel TWEE maniere voor hoe die personeel opgelei kan word.	(2)
5.3.3	Jeff het nie baie geld gehad om tydens die eerste paar maande sy produkte te bemark nie. Stel DRIE maniere voor waarop Jeff sy produkte op 'n goedkoper en meer bekostigbare manier kon bemark het.	(3)
5.3.4	Jeff gebruik die Trots Suid-Afrikaans ('Proudly South African')-logo op sy produkte. Verduidelik waarom dit hom 'n mededingende voordeel kan gee.	(3)
5.3.5	Mike en Jeff het albei R30 000,00 wins per maand vir die eerste ses maande gemaak. Verduidelik hoekom hulle dieselfde wins gemaak het.	(2)
5.3.6	Bereken die maandelikse wins van Mike se besigheid vir maand 7–12. Toon ALLE berekeninge.	(6)
5.3.7	Jeff besluit om 900 produkte in maand 13 te vervaardig. Hoeveel produkte moet hy verkoop om gelyk te breek?	(4)
5.3.8	Verduidelik moontlike redes vir die verskil in verkope in die eerste ses maande en die laaste ses maande vir:	
	(a) Mike	(4)
	(b) Jeff	(4)
<b>40</b>	<b>TOTAAL AFDELING E:</b>	
<b>200</b>	<b>GROOTTOTAAL:</b>	



**AFDELING E: TEORIE VAN PRODUKSIE EN ENTREPNEURSKAP**

**VRAAG 5**

- 5.1 Noem VIER funksies van goeie gehalte verpakking van bederfbare produkte. (4)
- 5.2 Noem DRIE metodes wat 'n entrepreneur kan gebruik om marknavorsing in sy/haar plaaslike gemeenskap te doen. (3)
- 5.3 Lees die scenario hieronder en beantwoord die vrae wat volg.

Mike en Jeff vervaardig soortgelyke produkte.		
<b>MIKE</b>	<ul style="list-style-type: none"> <li>• Neem mense met baie basiese vaardighede in diens</li> <li>• Koop die goedkoopste grondstowwe en ingevoerde materiale</li> <li>• Vervaardig een produk teen R30,00 en verkoop dit vir R60,00</li> <li>• Het sy produkte van die begin af goed bemark</li> <li>• Het klagtes ontvang en klanter bring die produkte terug</li> </ul>	<b>JEFF</b>
<ul style="list-style-type: none"> <li>• Neem mense met baie basiese vaardighede in diens</li> <li>• Skep gereeld opleidings-geleenthede vir sy werkers</li> <li>• Koop net by plaaslike verskaffers</li> <li>• Vertoon die embleem hieronder op sy produkte</li> </ul>		<ul style="list-style-type: none"> <li>• Vervaardig een produk teen R50,00 en verkoop dit vir R90,00</li> <li>• Het nie gehad om tydens die eerste paar maande bemarking te doen nie, maar het in die sesde maand goed bemark</li> </ul>
<p>Die tabel hieronder toon die gemiddelde verkoopsyfers vir albei besighede vir die eerste jaar.</p>		
	<b>Mike</b>	<b>Jeff</b>
<b>Verkope vir maand 1-6</b>	1 000 produkte per maand	750 produkte per maand
<b>Verkope vir maand 7-12</b>	900 produkte per maand	800 produkte per maand

5.3.1

Mike se onderneming het 'n aantal klagtes ontvang en klanter bring die produkte terug. Verduidelik hoe Mike hierdie klanter moet hanteer sodat hy steeds goeie klanterverhoudings kan handhaaf.

(5)



4.1.6 Evalueer die geskiktheid van EIENDOM A en EIENDOM B deur die tabel hieronder in die ANTWOORDEBOEK te voltooi:

KRITERIA	EIENDOM A	EIENDOM B
(a) Sekuriteit	(2)	(2)
(b) Instandhouding	(2)	(2)
(c) Privaatheid	(2)	(2)

(12)

4.1.7 Kies die geskikste eiendom vir die gesin.

(1)

4.2 Lees die scenario hieronder en beantwoord die vrae wat volg.

Tom en Gina het 'n televisieset vir hulle sitkamer gekoop. Met inagneming van al die koste verbonde aan die koop van hulle huis, het hulle 'n tweedehandse stel gekoop. Kort nadat hulle die stel gekoop het, het hulle probleme daarmee ondervind waaroor die verkoper hulle nie ingelig het nie. Hulle moes dit vir herstelwerk stuur. Die finale rekening vir die herstelwerk was meer as die oorspronklike kwotasie wat deur die herstelmaatskappy gekwoteer is.

4.2.1 Noem Tom en Gina se regte ten opsigte van die tweedehandse televisieset wat hulle gekoop het, volgens die Wet op Verbruikersbeskerming.

(3)

4.2.2 Beveel aan waarom dit vir Tom en Gina beter sou gewees het om 'n televisieset op huurkoop te koop in plaas daarvan om 'n tweedehandse stel te koop.

(4)

4.3 Afvalbeheer is elke huishouding se verantwoordelikhed. Verduidelik die uitwerking van 'n onverantwoordelike houding teenoor afvalbeheer op die bewaring van die omgewing.

(6)

40 **TOTAAL AFDELING D:**



**AFDELING D: BEHUISING EN SAGTE MEUBLEMENT**

**VRAAG 4**

4.1 Bestudeer die scenario hieronder en beantwoord die vrae wat volg.

Tom, Gina en hul 5-jarige seun woon in 'n gehuurde huis. Tom werk dikwels in ander stede. Hulle het genoeg geld vir 'n deposito gespaar vir wanneer hulle hulle eie eiendom wil koop. Daar is baie koste verbonde aan die koop van eiendom en hulle beset dat hulle die eerste paar jaar beperkte fondse sal hê vir instandhouding. Nadat hulle na baie eiendomme gekyk het, het hulle twee gevind waarvan hulle hou. Hulle moet uiteindelik kies tussen die twee eiendomme wat hieronder beskryf word.

<p><b>Eiendom A</b></p> <p>R800 000,00</p> <p>Skakelhuis met drie slaapkamers in 'n veilige kompleks met 'n klein tuinjie en swembad</p> <p>Heffing, insluitende eiendomsbelasting: R700,00 per maand</p>	<p><b>Eiendom B</b></p> <p>R800 000,00</p> <p>Drieslaapkamerhuis in 'n stil buurt met groot tuin en swembad</p> <p>Eiendomsbelasting: R600,00 per maand</p>
---	---

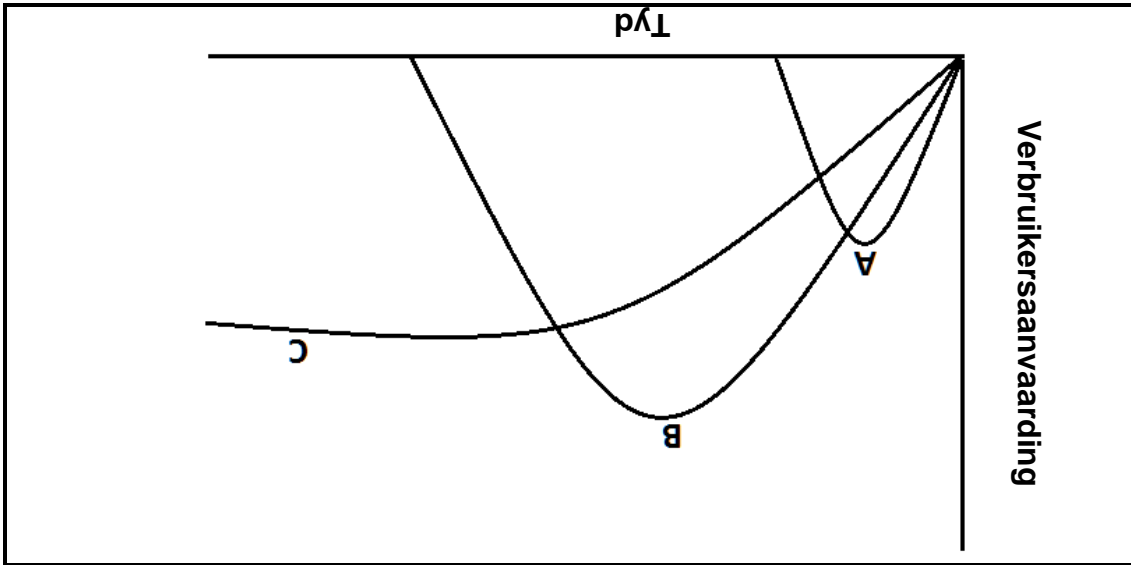
4.1.1 Identifiseer die tipe huiseienaarskap vir:

- (1) (a) EIENDOM A
- (1) (b) EIENDOM B
- 4.1.2 Noem SES koste waarvoor Tom en Gina voorsiening moet maak wanneer hulle 'n verbandlening uitneem. (6)
- 4.1.3 Noem die spesifieke verskuipte koste wat Tom en Gina sal moet betaal as hulle in hulle nuwe huis intrek voordat dit in hulle naam geregistreer is. (1)
- 4.1.4 Aan wie moet Tom en Gina die verskuipte koste genoem in VRAAG 4.1.3 betaal? (1)
- 4.1.5 In die proses om die eiendom te koop, sal hulle 'n koop aanbod moet teken. Verduidelik die verband tussen 'n *koop aanbod* en 'n *koopakte*. (4)



3.4

Bestudeer die grafiek hieronder, wat drie verskillende modesiklusse aandui, en beantwoord die vrae wat volg.



3.4.1 Noem elke modesiklus (A–C) in die grafiek. (3)

3.4.2 Gee 'n kort beskrywing van ELK van die modesiklusse hierbo genoem. (6) (3 x 2)

3.5

Lees die scenario hieronder en beantwoord die vraag wat volg.

<p>'n Jong manlike volwassene is op die punt om met sy eerste werk by 'n regstroom te begin. Hy het reeds 'n swart baadjie en 'n paar formele swart skoene. Die lysies hieronder bevat klerem-items wat hy oorweeg om met 'n beperkte begroting te koop.</p>	
<p><b>LYS A</b></p>	<p><b>LYS B</b></p>
<p>Swart oopkooptruie Bruin baadjie Klipkleur soldatejas ('trench coat') Bruin langbroek Donkerblou jeans Wit T-hemp Hemp met groot rooi en blou ruite</p>	<p>Swart langbroek Houtskoolkleur langbroek Wit hemp Wit hemp met smal swart strepies Ligblou hemp Houtskoolkleur oopkooptruie Grys onderbaadjie</p>

(8) Kies EEN lys en gee redes waarom jy dit as 'n goeie keuse beskou.

**TOTAAL AFDELING C: 40**




## 3.3

Bestudeer die foto en die inligting hieronder en beantwoord die vrae wat volg.

Die foto toon die kleredragkode van 'n maatskappy.

Die korporatiewe kiere bestaan uit:

- Enige formele swart langbroek/romp
- Maatskappy se koningsblou hemp/bloese



3.3.1

Noem VIER voordele van korporatiewe kiere vir die maatskappy en die werknemers. (2 x 2)

(4)

3.3.2

Noem VIER maniere waarop die werknemers hul individualiteit kan uitdruk wanneer hulle korporatiewe kiere dra.

(4)

3.3.3

Verduidelik hoe 'n goeie eerste indruk van 'n werknemer tot voordeel kan wees vir:

(a) Die maatskappy

(4)

(b) Die werknemer self


(4)



## AFDELING C: KLEDING

## VRAAG 3

3.1 Die rok hieronder is vir die 2012-somer geadverteer. Bestudeer die foto en die beskrywing en beantwoord die vrae wat volg.

	<p>Die vrou op die foto dra 'n rok met sagte voue by die halslyn wat oormekaar vou. Die middellyfband is gelig en die rok het 'n knielengteromp wat effens uitklok. Dit skep 'n tydlose silhoeët terwyl die kolle op die materiaal 'n 1950-antiek-sjiek-gevoel aan die rok verleen.</p> <p>[Aangepas uit <a href="http://www.woolworths.co.za">www.woolworths.co.za</a>]</p>
--	--

3.1.1 Verduidelik die term *silhoeët* in die konteks van hierdie foto. (2)

3.1.2 Noem DRIE nie-verbale boodskappe wat deur die rok op die foto oordra word. (3)

3.2 Lees die inligting hieronder en beantwoord die vraag wat volg.

<p><b>MAAK 'N REKENING OOP</b></p> <p>'n Truworths-rekening gee jou toegang tot 'n wêreld van modes wat internasionaal geïnspireer is. Dit hang van jou af of jy jou inkopies gaan doen volgens die spesiale sesmaandeplan, waar rente nie bygevoeg word nie (na Truworths se goeddunke) as jou paaiemente opbetaal is, of volgens die 12-maande-, rentedraende plan.</p> <p>[Bron: <a href="http://www.truworths.co.za">www.truworths.co.za</a>]</p>
---

(2) Noem wanneer 'n Truworths-rekeninghouer rente sal betaal.



2.3

Lees die inligting hieronder, wat op 'n graankoshouer voorgekom het, en beantwoord die vrae wat volg:

**AL WAT JY NODIG HET OM GROOT EN STERK TE WORD, IS 'N WARM, VEILIGE SLAAPLEK, IEMAND WAT JOU LIEFHET EN ABC GRAANKOS**

ABC GRAANKOS is die gesondste en voedsaamste gesinsgraankos in Suid-Afrika.

ABC GRAANKOS is hoog in vesel en verskat 18 vitamïene en minerale.

ABC GRAANKOS IS EEN VAN SUID-AFRIKA SE GUNSTELINGGRAANKOSSE

Aanbeveel deur vooraanstaande dokters

*Kyk uit vir die nuwe ABC GRAANKOS-pakke met 'Brain Boosters' op die agterkant.*

2.3.1 Identifiseer DRIE misleidende stellings in die advertensie hierbo. (3)

2.3.2 Gee redes waarom die stellings (VRAAG 2.3.1) as misleidende stellings beskou word. (4)

2.3.3 Noem DRIE kanale vir verbruikersklages met betrekking tot misleidende inligting op voedsel-etikette. (3)

2.4

Bestudeer die lys bestanddele vir slaie en beantwoord die vrae wat volg.

SLAIE A	SLAIE B
250 ml gaar skulpienoedels 50 ml groensoetrissie 50 ml gerasperde wortels 2 gekookte eiers 50 ml olyfolie	250 g gebraaide hoenderstukkie 200 ml groenboontjies 100 g cheddar kaas, in blokkies gesny 125 ml crotons 125 ml mayonnaise

2.4.1 Gee SES redes waarom SLAIE A goed sal wees vir 'n persoon wat aan MIG/Vigs ly en wat sere in sy/haar mond het. (6)

2.4.2 Evalueer die geskiktheid van SLAIE B vir 'n persoon wat aan vetsug ly. (7)

**TOTAAL AFDELING B: 40**





**AFDELING B: VOEDSEL EN VOEDING**

**VRAAG 2**

2.1 Riad, 'n 16-jarige seun, eet geen dierlike produkte nie, behalwe eiers, melk en melkprodukte.

2.1.1 Noem die voedingsverwante siekte wat Riad waarskynlik sal ontwikkel. (1)

2.1.2 Verduidelik waarom Riad waarskynlik die voedingsverwante siekte in VRAAG 2.1.1 genoem, sal ontwikkel. (3)

2.1.3 Stel voor waarom Riad nie gevaar loop om osteoporose te ontwikkel nie. (3)

2.2 Lees die uittreksel hieronder en beantwoord die vrae wat volg.

Linda is 18 jaar oud en ly aan vetsug met 'n LMI-telling van 32. Linda staan soggens te laat op om ontbyt te eet. Sy stap elke dag skool toe. By die skool koop sy dikwels geroosterde kaas-en-tamatietoebroodjies wat met bruinbrood gemaak word en lemoensap. Sy wil graag gaan netbal speel by die skool. Sy kyk graag TV en peusel aan skyfies en soet koekies.

2.2.1 Verduidelik vir Linda waarom LMI staan en waarvoor dit gebruik word. (2)

2.2.2 Noem die tipe diabetes wat Linda waarskynlik as gevolg van haar huidige leefstyl gaan ontwikkel. (1)

2.2.3 Verduidelik waarom Linda gevaar loop om die tipe diabetes in VRAAG 2.2.2 genoem, te ontwikkel. (2)

2.2.4 Beveel VYF veranderinge aan wat Linda aan haar dieet en leefstyl kan maak om gewig te verloor. Voltooi die tabel hieronder in die ANTWOORDEBOEK.

(5)	<b>ASPEK</b>	<b>VOORGESTELDE VERANDERING</b>
	(a) Dieet	(4)
	(b) Leefstyl	(1)



1.4 Kies DRIE veristes uit die lys hieronder wat 'n kontrak 'n wettige dokument sal maak wanneer 'n huis gekoop word. Skryf slegs die letters (A–F) langs die vraagnummer (1.4) in die ANTWOORDEBOEK neer.

- A Die koper moet die deposito kontant betaal.  
 B Die verkoper moet die voorblad van die dokument teken.  
 C Dit moet vir die koper moontlik wees om die voorgeskrewe paaiemente te betaal.  
 D Beide verkoper en koper moet by hulle volle verstand wees.  
 E Die koopakte moet by die kontrak ingesluit wees.  
 F Beide koper en verkoper moet met die inhoud van die kontrak saamstem.

(3)

1.5 Identifiseer VYF aspekte uit die lys hieronder wat in ag geneem moet word wanneer werksverdeling en tydskedules beplan word. Skryf slegs die letters (A–J) langs die vraagnummer (1.5) in die ANTWOORDEBOEK neer.

- A Beskikbare toerusting  
 B Beskikbaarheid van grondstowwe  
 C Kliënteverhoudinge  
 D Finansiële rekordhouding  
 E Verkoopplek  
 F Produkstokke  
 G Vaardighede van die werkers  
 H Teikenaflewingsdatums  
 I Teikenmark  
 J Tyd nodig om elke proses te voltooi

(5)

1.6 Die volgende stellings is VERKEERD. Verander die onderstreepte woord om elke stelling KORREK te maak. Skryf die korrekte woord langs die vraagnummer (1.6.1–1.6.5) in die ANTWOORDEBOEK neer.

- 1.6.1 Oordragkoste word aan die eiendomsgagent betaal.  
 1.6.2 'n Huiseienaar mag 'n deposito as 'n byvoordeel van die werkgewer ontvang.  
 1.6.3 Die hereregtefooi word deur die eiendomsgagent geregleer.  
 1.6.4 Heffings word aan die munisipaliteit betaal.  
 1.6.5 Wanneer 'n persoon iets by 'n winkel op rekening koop, hou die kleinhandelaar die item totdat die volle bedrag betaal is.

#### 40 TOTAAL AFDELING A:

(5)



1.1.17 Kies 'n rede waarom sommige entrepreneurs misluk:

- A Hulle neem berekende risiko's
- B Vaste rentekoerse
- C Krediet aan kliente
- D Lang werksure

(1)

1.1.18 Die volgende mag van die salaris van 'n werknemer wat R4 500,00 per maand verdien, afgetrek word:

- A Lisenies
- B Rente
- C Belasting
- D WVF

(1)

1.2 Kies die korrekte woord(e) tussen hakies om elke stelling te voltooi. Skryf die woord(e) langs die vraagnummer (1.2.1-1.2.5) in die ANTWOORDEBOEK neer.

1.2.1 Die verkoper van 'n huis moet (batewinstbelasting/kapitaal-winstbelasting) betaal op die wins wat hy/sy op sy/haar tweede huis maak.

1.2.2 Belasting wat op nie-essensieële items, soos tabak en alkohol, betaal word, staan as (invoerbelasting/akksynsreg) bekend.

1.2.3 'n Persoon wat meer as R70 000,00 per jaar verdien, moet (inkomstebelasting/voorlopige belasting) betaal.

1.2.4 Wanneer belasting van 'n werknemer se salaris afgetrek word, staan dit as die (voorlopige/lopende) betaalsteisel bekend.

1.2.5 (Belasting op toegevoegde dienste/Belasting op toegevoegde waarde) word by die verkoopprys van spesifieke goedere en dienste gevoeg.

(5)

1.3 Kies VIER redes uit die lys hieronder waarom baie jong volwassenes handelsnaam-etikette koop. Skryf slegs die letter (A-H) langs die vraagnummer (1.3) in die ANTWOORDEBOEK neer.

- A Dit is 'n simbool van hoë sosiale status.
- B Dit is goedkoop.
- C Dit is tydloos.
- D Dit is oral beskikbaar.
- E Dit dui op goeie styl/smaak.
- F Dit verhoog die selfbeeld van die persoon wat dit dra.
- G Dit laat verkope styg.
- H Dit waarborg kits-populariteit.

(4)



1.1.12 Die term vir 'n kenmerkende vorm van kleredrag met herkenbare eienskappe:

- A Couture
- B Mode
- C Styl
- D Modeneiging





(1)

1.1.13 Modeverandering word versnel deur ...

- A modebewuste verbruikers.
- B vooraanstaande mode-ontwerpers.
- C elegante modeliers.
- D uitspatige modevertonings.

(1)

1.1.14 Kies die skoен wat die geskikste sal wees om saam met 'n formele swart broek werk toe te dra:

			
1	2	3	4
Donkerbruin leerstewel met wit veter	Swart boot-skoen met wit veter	Swart leer-toerygskoen	Swart skoен met katoen-bodeel en wit vetters

(1)

1.1.15 Sommige kleinhandelaars verkoop produkte wat van organiese katoen gemaak is. Die rede hiervoor is dat ...

- A verbruikers nie van natuurlike teksielstowwe hou nie.
- B die handelaars oor die omgewing besorg is.
- C die ekonomiese resessie beide handelaars en verbruikers raak.
- D organiese katoen goedkoper as anorganiese katoen is.

(1)

1.1.16 'n Mediese sertifikaat kan vereis word as 'n werknemer vir ... siek is.

- A een dag
- B twee dae
- C meer as drie aaneenlopende dae
- D meer as twee aaneenlopende dae

(1)



- 1.1.6 Die geskikste peuselhappie vir iemand wat aan hoë bloeddruk ly:  
 A Hawermoutkoekies  
 B Gekerfde biltong  
 C Gesoute neute  
 D Soutbeskuitjies (1)
- 1.1.7 Die nutriënt wat die absorpsie van yster verbeter:  
 A Vitamien B<sub>1</sub>  
 B Vitamien B<sub>3</sub>  
 C Vitamien C  
 D Vitamien A (1)
- 1.1.8 Gereelde oefening sal 'n daabees se ...-vlak laat daal.  
 A bloedcholesterol  
 B bloeddruk  
 C gluten  
 D insulien (1)
- 1.1.9 Jy het 'n oortrokke bankrekening van R14 000,00 waarop jy 12,5% rente betaal. Jy skuld nog R50 000,00 op jou huislening, waarop jy 9% rente betaal. Wat behoort jy te doen as jy jou bonus ontvang?  
 A Belê dit vir een jaar teen 'n vaste rentekoers  
 B Spaar dit in jou kredietkaartrekening  
 C Deponêr dit in jou huisleningrekening  
 D Betaal soveel as moontlik van jou oortrokke rekening (1)
- 1.1.10 Die verbruiker wat voordeel uit 'n stygende rentekoers sal trek, is een wat ...  
 A 'n motorlening betaal en geld in 'n spaarrekening het.  
 B al sy skuld betaal het, maar nog nie kon spaar nie.  
 C 'n huis huur en geld in 'n spaarrekening spaar.  
 D die meeste items met sy kredietkaart koop en geld in aandele belê. (1)
- 1.1.11 Sara het vir vyf jaar R300,00 per maand in 'n bankspaarrekening gespaar. Noudat sy die geld wil gebruik, kan sy minder koop as wat sy verwag het. Dis 'n voorbeeld van ...  
 A rente.  
 B belasting.  
 C resessie.  
 D inflasie. (1)



## AFDELING A: KORTVRAE

## VRAAG 1

1.1 Verskeie opsies word as moontlike antwoorde op die volgende vrae gegee. Kies die antwoord en skryf slegs die letter (A–D) langs die vraagnommer (1.1.1–1.1.18) in die ANTWOORDEBOEK.

- 1.1.1 Kies die voedsels ryk aan wateroplosbare vesel wat voordelig is vir 'n persoon wat aan hoë cholesterol ly:  
 A Boontjies en neute  
 B Rosyne en mielies  
 C Appels en peulgroente  
 D Bruinrys en druiwe (1)
- 1.1.2 Identifiseer die voedsels wat die immunistelsel van 'n MIV/Vigs-pasiënt sal versterk:  
 A Spinasie, botterskorsie ('butternut squash') en sojabone  
 B Appels, witbrood en gebraaide hoender  
 C Vispastei, groenteslaai en jogurt  
 D Mielies, grondboontjies en melk (1)
- 1.1.3 'n Persoon wat 'n glutenvrye dieet volg, kan die volgende produkte met veiligheid gebruik:  
 A Koring en mielies  
 B Hawermout en sojabone  
 C Rys en mellemeele  
 D Gort en rog (1)
- 1.1.4 Kies die toestand waar die are vernou en verstop raak as gevolg van die opbou van cholesterol binne-in die aarwande:  
 A Osteomalasie  
 B Arteriosklerose  
 C Diabetes  
 D Anemie (1)
- 1.1.5 Kies 'n risikofaktor vir koronêre hartsiektes wat deur middel van dieet beheer kan word:  
 A Osteoporose  
 B Fisiese onaktiwiteit  
 C Hoë bloeddruk  
 D Diabetes (1)





2. AL die afdelings is VERPLIGTEND.
3. Beantwoord AFDELING A en AFDELING B in die ANTWOORDEBOEK.
4. Nommer die antwoorde korrek volgens die nommeringstelsel wat in hierdie vraestel gebruik word.
5. Begin ELKE vraag op 'n NUWE bladsy.
6. Jy mag 'n sakrekenaar gebruik.
7. Skryf slegs met blou of swart ink.
8. Gee aandag aan spelling en sinskonstruksie.
9. Skryf netjies en leesbaar.

AFDELING		
PUNTE	TYD (MINUTE)	
40	20	A. Kortrae
40	40	B. Voedsel en Voeding
40	40	C. Kleding
40	40	D. Behuising en Sagte Meublement
40	40	E. Teorie van Produkksie en Entrepreneurskap

1. Hierdie vraestel bestaan uit VYF afdelings.

## INSTRUKSIES EN INLIGTING



\* C O N S D M \*



Hierdie vraestel bestaan uit 16 bladsye.

TYD: 3 uur

PUNTE: 200

FEBRUARIE/MART 2014

VERBRUIKERSTUDIES

GRAAD 12

NASIONALE  
SENIOR SERTIFIKAAT

Department:  
Basic Education  
REPUBLIC OF SOUTH AFRICA

basic education

